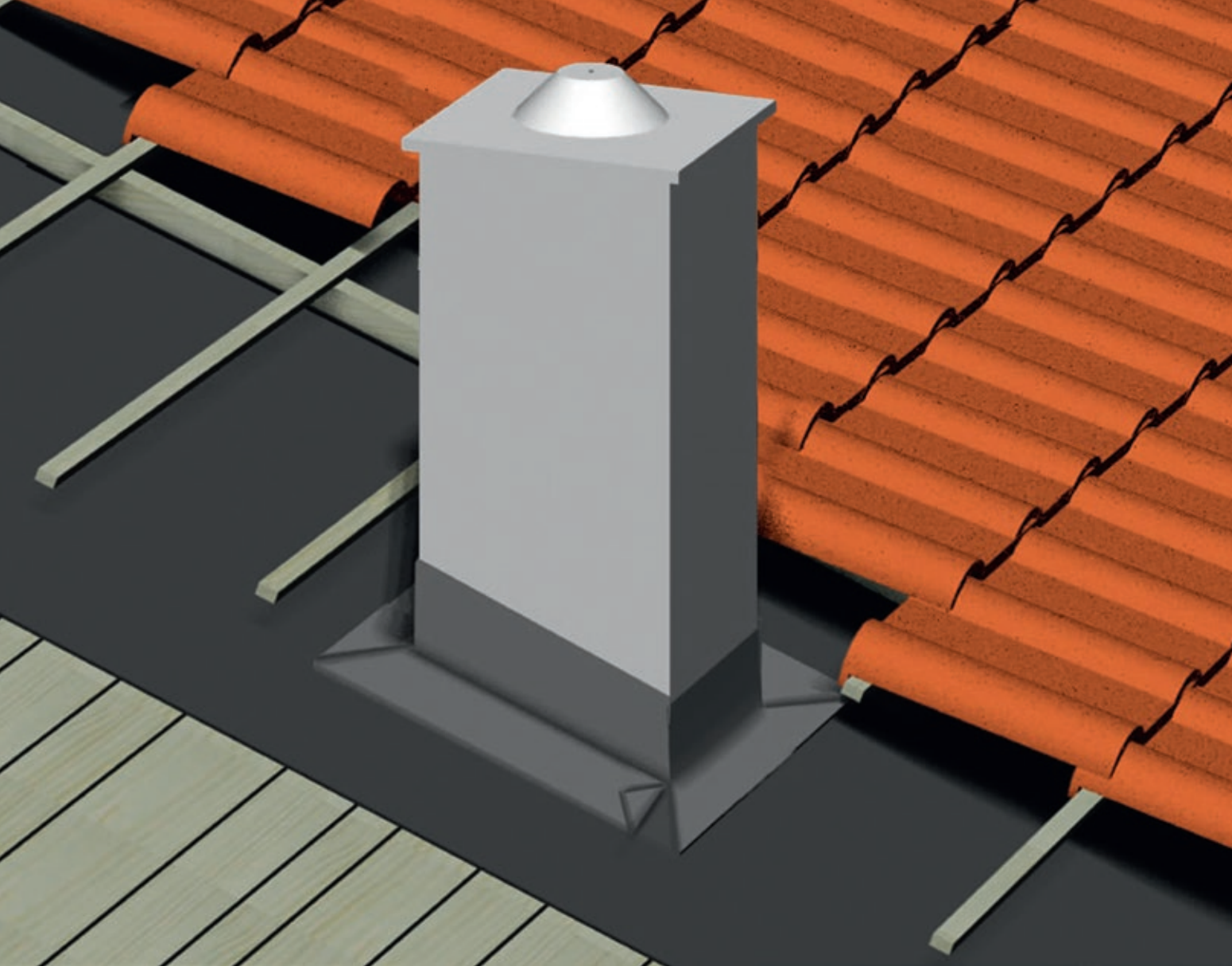


EXTERIOR CHIMNEY CONNECTION

RAINPROOF AND WINDPROOF STEP BY STEP



ISOCELL



ISOCELL DICHTSYSTEM FÜR KAMINANSCHLÜSSE AUSSEN



THE PROFESSIONAL INTEGRATION OF THE CHIMNEY

With the correct integration of the chimney, attention must be paid to wind and rainproof sealing.

The connection of the roof sheeting to the chimney can be made individually with the OMEGA roof sheeting on the construction site. Starting from the bottom, a handcrafted sealing sleeve is manufactured and connected with the ISOCELL sealing system.

The OMEGA roofing membranes with fleece surface can be glued with the OMEGA QUILLI adhesive sealant or the AIRSTOP ULTRA adhesive tape and should be pulled up 15 cm (at least 2 cm above the upper edge of the counter batten).

A pre-priming of the surface is recommended if necessary. With a correspondingly small joint dimension, the chimney connection can also be made with an adhesive tape (OMEGA PLASTO tape, AIRSTOP ULTRA adhesive tape).

The OMEGA PoBit sealing paste in combination with AIRSTOP fleece adhesive tapes is also suitable for creating a tight connection.

KAMINANSCHLUSS

MIT OMEGA QUILLI KLEBEDICHTMASSE



Cut out the chimney duct at the roof laying membrane.



Starting in the lower area, apply the OMEGA QUILLI sealing compound to the chimney.



Run the lower connecting strip 15 cm up the chimney (but at least 2 cm above the upper edge of the counter battens).



Also apply the OMEGA QUILLI sealant to the side of the chimney.



Allow for a lateral overhang of approx. 10 cm.



Lateral elevation at least 15 cm up the chimney, but at least 2 cm over the upper edge of the counter battens



Cut along the front edge of the chimney seal.



Corner area with the OMEGA QUILLI adhesive sealant



Tape the lateral connecting membrane on both sides of the roofing membrane with the OMEGA QUILLI adhesive sealant so that it is rainproof.



OMEGA QUILLI adhesive sealant

For rain and windproof bonding of roofing membranes in the overlapping area and at connections. Adhesive sealant for sealing the nail and staple pins in the area of the counter battens. For butt-bonding soft wood fiber, OSB and MDF boards.

Processing temperature: from + 7° C

Tested for rain resistance by Holzforschung Austria order no.: 301/2003/2 - T/HH

CHIMNEY CONNECTION

WITH OMEGA QUILLI ADHESIVE SEALANT



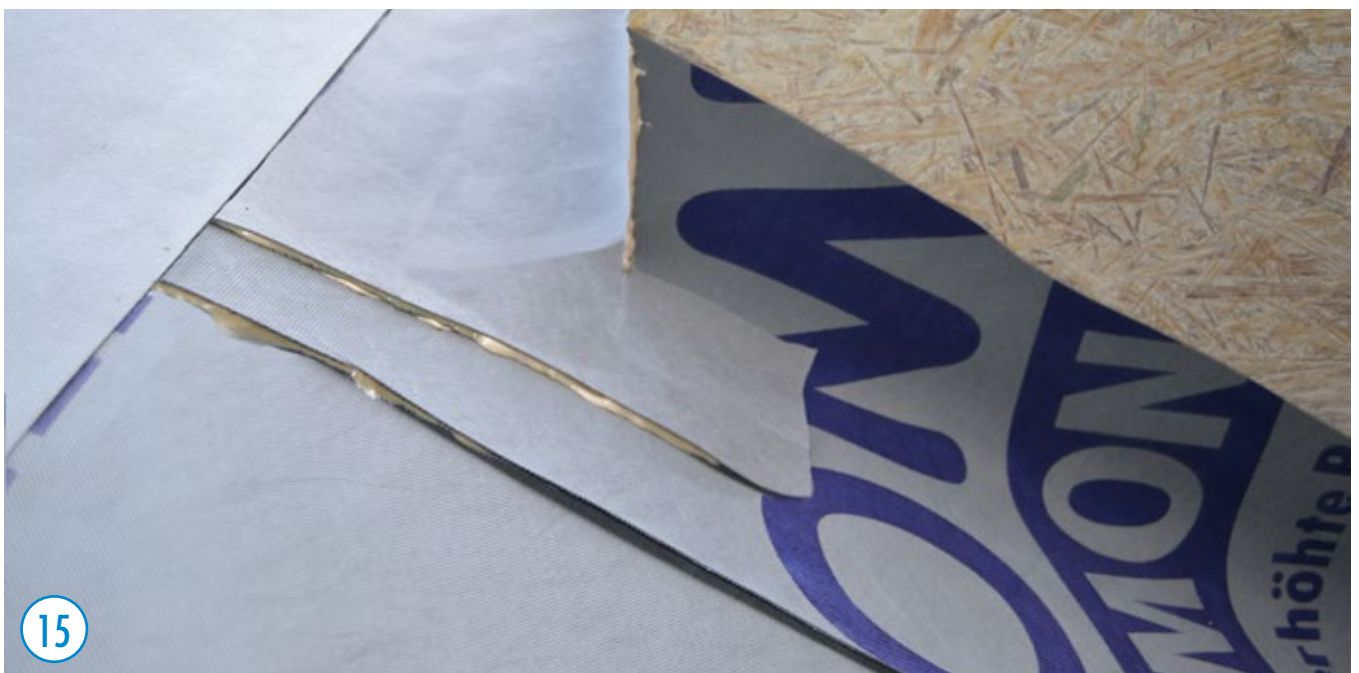
Seal all connections and overlaps in the lower area with the OMEGA QUILLI adhesive sealant.



In the upper chimney area, also allow for a lateral overhang of approx. 10 cm and cut it off along the upper corner of the chimney.



Also run the upper connecting strip at least 15 cm up the chimney - but at least 2 cm above the upper edge of the counter battens.



Above penetrations and installations with a width of more than 50 cm, transverse channels or deflection angles must be arranged on a slope and with sufficient lateral overhang.

CHIMNEY CONNECTION

WITH OMEGA QUILLI ADHESIVE SEALANT + AIRSTOP ULTRA ADHESIVE TAPE



If the upper connection area is sealed with an AIRSTOP adhesive tape, pre-priming (e.g. with the UNI SPRAY spray primer) is recommended.



UNI SPRAY spray primer

To optimize the liability of adhesive tapes. Stands out particularly its rapid processing.

Yield: approx. 50 running meters with a width of 4 cm Processing temperature: from -5°C



The upper connection area can also be sealed around the chimney with the AIRSTOP ULTRA adhesive tape.



In addition, all chimney corners can be sealed with the adhesive tape.



AIRSTOP ULTRA Tape

Slightly stretchable tape for airtight sealing indoors and outdoors. High adhesion spectrum even for difficult substrates such as PP films.

Processing temperature: from -5°C

CHIMNEY CONNECTION

WITH AIRSTOP FLEX ADHESIVE TAPE AND OMEGA POBIT SEALING PASTE



In addition, the upper connection area can be sealed with AIRSTOP FLEX adhesive tape. If necessary, apply primer beforehand.



Mask all corners with the AIRSTOP FLEX adhesive tape.



Optionally, the areas covered with AIRSTOP FLEX adhesive tape can be coated with OMEGA PoBit sealing paste.



CHIMNEY CONNECTION

WITH OMEGA PLASTOBAND



The lateral connection strips on the chimney can also be executed with the OMEGA PLASTO tape. If necessary, apply primer beforehand.

PRODUCT DESCRIPTION

AIRSTOP FLEX Tape



In order to ensure the air and wind tightness of the building envelope, the foils or panel materials provided for this purpose must be permanently sealed at overlaps, joints, connections and penetrations. The AIRSTOP FLEX adhesive tape is slightly stretchable, tear-resistant, can be plastered over and painted over, with a high proportion of adhesive that has a wide range of adhesion.

AVAILABLE IN THE FOLLOWING DIMENSIONS						
roll width	50 mm	60 mm	75 mm	100 mm	150 mm	200 mm
roll width	25 m	25 m	25 m	25 m	25 m	25 m
liner division			-- 30/45	50/50	75/75	100/100
Box Contents/Rolls	8	8	4	4	2	2

OMEGA PoBit Paste



Ready-to-use, one-component water-based elastomeric bitumen waterproofing. OMEGA PoBit is ideal for seamless sealing work in critical areas in the window and door area, as a second water-bearing level under window sills, for penetrations and for sealing bases outdoors. OMEGA PoBit can also be used to waterproof buildings in the areas relevant to ÖNORM B 3691 and ÖNORM B 3692. OMEGA PoBit sealing paste adheres to many substrates such as wood, wood-based materials, concrete, aerated concrete, metal, plaster, polyester, gypsum building materials, pre-treated bitumen sheeting and rigid foam panels (EPS, XPS, PUR). The product is applied with a brush or spatula. Consumption: 1.5 kg / m² per mm application thickness. Processing temperature: from +5 °C

Bucket	10 kg
--------	-------

OMEGA PLASTO Band



In order to ensure the air and wind tightness of the building envelope, the foils or panel materials provided for this purpose must be permanently sealed at overlaps, joints, connections and penetrations. The OMEGA PLASTO tape is a butyl adhesive tape with a fleece carrier that can be plastered over and painted over. The split liner allows for careful execution in transition and corner areas.

AVAILABLE IN THE FOLLOWING DIMENSIONS							
Rollenbreite	75 mm	100 mm	160 mm	200 mm	250 mm	300 mm	450 mm
Rollenlänge	25 m	25 m	25 m	25 m	25 m	20 m	15 m
Linerteilung	30/45	30/70	30/130	30/170	30/220	30/120/150	30/210/210
Kartoninhalt/Rollen	4	2	2	1	1	1	1

YOUR RETAILER:

ISOCELL GmbH & Co KG

Gewerbestraße 9

5202 Neumarkt am Wallersee | Österreich

Tel.: +43 6216 4108-0 | Fax: +43 6216 7979

office@isocell.at | WWW.ISOCELL.COM

ISOCELL IRELAND - UK - NORTH AMERICA

Newtownmountkennedy Wicklow

Tel.: +353 (0) 866018555 | UK Free-phone 0800 433 4833

info@isocell.ie info@isocelluk.co.uk www.isocellairstop.com

ISOCELL

